

BELMONT FIRE DEPARTMENT

1 SCHUYLER STREET
BELMONT, NY 14813



DRAWING INDEX

SITE

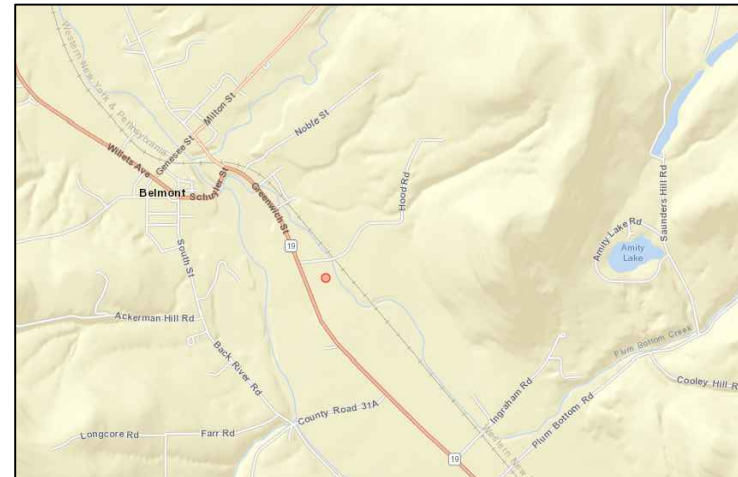
- C100 GENERAL NOTES
- C101 EXISTING CONDITIONS
- C102 SITE & UTILITIES
- C103 GRADING & EROSION CONTROL
- C104 DETAILS
- C105 DETAILS
- C106 DETAILS

STRUCTURAL

- S100 FOUNDATION
- S101 FRAMING PLAN
- S102 TRUSS PLAN
- S103 DETAILS
- S104 SCHEDULES

ARCHITECTURAL

- A100 FLOOR PLAN
- A101 CEILING PLAN
- A102 ROOF PLAN
- A201 NORTH AND EAST EXTERIOR ELEVATIONS
- A202 SOUTH AND WEST EXTERIOR ELEVATIONS
- A301 DETAILS
- A302 DOOR SCHEDULE AND WINDOW TYPES



CONTACTS	
ARCHITECT	
CIVIL ENGINEER & PROJECT MANAGER	
STRUCTURAL ENGINEER	
MECHANICAL & ELECTRICAL ENGINEER	



DMSJ ENGINEERS & ARCHITECTS
DESIGN FIRM

GENERAL NOTES

GENERAL CONDITIONS OF THE CONTRACT FOR CONSTRUCTION AS PROVIDED BY THE OWNER SHALL BE INCORPORATED INTO THE CONTRACT BY REFERENCE.

COORDINATE ALL WORK WITH ARCHITECTURAL DRAWINGS AND SPECIFICATIONS.

ALL WORK SHALL CONFORM TO FEDERAL, STATE AND LOCAL CODES AS INTERPRETED BY THE LOCAL AUTHORITY HAVING JURISDICTION.

THE GENERAL CONTRACTOR MUST BE QUALIFIED FOR THIS WORK AND MUST FURNISH AND INSTALL EVERYTHING NECESSARY TO PROVIDE CONSTRUCTION COMPLETION.

THE GENERAL CONTRACTORS IS RESPONSIBLE FOR THE SAFETY AND ADEQUACY OF HIS METHODS AND DAMAGE WHICH MAY RESULT FROM THEIR IMPROPER REMOVAL, CONSTRUCTION, MAINTENANCE OR OPERATION DURING COMPLETION OF THE PROJECT.

THE GENERAL CONTRACTOR SHALL PROVIDE PROPER SAFEGUARDS FOR THE PROTECTION OF WORKMEN, AND OWNERS PROPERTY AND SHALL POST DANGER WARNINGS AGAINST HAZARDS CREATED BY CONSTRUCTION OPERATIONS.

THE GENERAL CONTRACTOR SHALL PROPERLY ERECT AND MAINTAIN AT ALL TIMES AS REQUIRED BY THE CONDITIONS AND PROGRESS OF THE WORK.

THE WORD 'PROVIDE' SHALL MEAN THAT THE CONTRACTOR SHALL SUPPLY ALL LABOR AND MATERIALS AS REQUIRED TO RESULT IN A COMPLETELY FINISHED AND OPERABLE SYSTEM.

THE GENERAL CONTRACTOR SHALL VERIFY ALL REQUIREMENTS, NOTES AND DIMENSIONS PRIOR TO THE START OF CONSTRUCTION.

THE GENERAL CONTRACTOR SHALL REPORT ANY DISCREPANCIES TO THE ENGINEERS AND ARCHITECTS IMMEDIATELY.

FINISH MATERIALS AND COLOR SELECTIONS WILL BE MADE BY THE ENGINEERS AND ARCHITECTS UNLESS OTHERWISE SPECIFIED OR NOTED.

THE GENERAL CONTRACTOR SHALL REVIEW ANY EXISTING DRAWINGS ON FILE WITH THE OWNER, PRIOR TO THE START OF ANY WORK.

THE GENERAL CONTRACTORS SHALL FAMILIARIZE THEMSELVES WITH EXISTING CONDITIONS, LOCATIONS AND PROJECT REQUIREMENTS PRIOR TO STARTING WORK.

THE GENERAL CONTRACTORS IS HELD RESPONSIBLE FOR ALL MATERIALS, CONSTRUCTION METHODS AND CRAFTSMANSHIP.

THE GENERAL CONTRACTOR SHALL PROPOSE A FULL METHODOLOGY FOR EXECUTION AND COMPLETION OF THE PROJECT.

THE GENERAL CONTRACTOR SHALL BE RESPONSIBLE FOR ALL CHANGES TO THESE DOCUMENTS, UPON APPROVAL FROM ENGINEERS AND ARCHITECTS.

THE GENERAL CONTRACTOR IS RESPONSIBLE FOR OBTAINING ALL REQUIRED PERMITS AND FEES FOR THE CONSTRUCTION OF THE PROJECT.

THE GENERAL CONTRACTOR IS RESPONSIBLE FOR ALL REQUIRED TEMPORARY PROTECTION TO MAINTAIN SAFETY THROUGHOUT THE PROJECT.

THE GENERAL CONTRACTOR IS RESPONSIBLE FOR IDENTIFYING THE REQUIREMENTS FOR TEMPORARY PROTECTION, PROJECT PHASING AND INCORPORATING THAT COST INTO THE BASE BID.

THE GENERAL CONTRACTOR SHALL IMMEDIATELY REMOVE AND CONSTRUCTION DEBRIS ONTO EXISTING ROADWAYS.

THE GENERAL CONTRACTOR SHALL REPAIR ANY EXCAVATION OR PAVEMENT FAILURES CAUSED BY CONSTRUCTION.

THE GENERAL CONTRACTOR SHALL BE RESPONSIBLE FOR OBTAINING THE SERVICES OF A QUALIFIED TESTING LABORATORY TO PERFORM ALL COMPACTION TESTING, ASPHALT TESTING AND CONCRETE TESTING TO COMPLETE THE WORK.

THE GENERAL CONTRACTOR SHALL COORDINATE WITH THE OWNER FOR OTHER REQUIREMENTS AND SHALL COMPLY WITH CODES AND REGULATIONS DURING CONSTRUCTION.

IN THE EVENT OF A DIMENSIONAL CONFLICT, DRAWINGS SHALL TAKE PRECEDENT OVER SPECIFICATIONS.

IN THE EVENT OF MATERIAL CONFLICT, SPECIFICATIONS SHALL TAKE PRECEDENT OVER DRAWINGS.

ALL SCALES AS NOTED ON DRAWINGS.

ALL WORK SHALL BE DONE IN ACCORDANCE WITH APPLICABLE CODES AND STANDARDS.

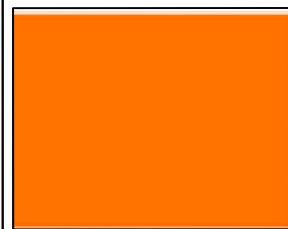
REFER TO DISCIPLINE SPECIFICATIONS FOR ADDITIONAL GENERAL NOTES.

EROSION CONTROL NOTES

1. ALL SITE WORK SHALL CONFORM TO THE CLEARING, STRIPPING AND EROSION CONTROL REQUIREMENTS OF THE NYSDEC AND THE VILLAGE OF BELMONT.
2. THE CONTRACTOR SHALL NOTIFY THE VILLAGE OF HIS/HER SCHEDULE ABOUT CLEARING, TOPSOIL REMOVAL, AND EROSION CONTROL TO PROVIDE PROPER TOWN INSPECTION.
3. ALL EROSION CONTROL MEASURES HAVE TO BE MAINTAINED THROUGH THE ENTIRETY OF THE PROJECT.
4. ALL RECORDS/REPORTS FROM THE NYSDEC AND SPDES AND STORMWATER DISCHARGES FROM ANY AND ALL CONSTRUCTION ACTIVITY.
5. ALL EROSION CONTROL MUST BE ESTABLISHED BEFORE BEGINNING CONSTRUCTION.
6. CONTRACTOR SHALL LIMIT GRADING DISTURBANCES AT ANY TIME TO LESS THAN 5 ACRES.
7. DUST CONTROL MUST BE IN PLACE FROM THE CONTRACTOR.
8. SEDIMENT BARRIERS SHALL BE INSTALLED PRIOR TO ANY GRADING WORK ALONG THE LIMITS OF DISTURBANCE AND SHALL BE MAINTAINED THROUGHOUT THE DURATION OF CONSTRUCTION.
9. ALL EROSION AND SEDIMENT CONTROL PRACTICES SHALL BE INSPECTED WEEKLY BY A QUALIFIED PROFESSIONAL.
10. ALL DISTURBED AREAS WHICH WILL NOT BE WORKED WITHIN 21 DAYS MUST BE SEEDED WITHIN 14 DAYS.
11. IMMEDIATELY AFTER CONSTRUCTION IS COMPLETE AREAS NEED TO BE SEEDED AND ROCK HOUNDED.

GRADING NOTES

1. ALL PROPOSED ELEVATIONS SHOWN ARE FINISHED GRADE ELEVATIONS
2. STRIPPED TOPSOIL SHALL BE STOCKPILED IN AREAS SHOWN ON PLANS OR AS DIRECTED BY OWNER'S REPRESENTATIVE.
3. SEQUENCE OF CONSTRUCTION:
 - A. CLEARLY IDENTIFY PROJECT WORK LIMITS IDENTIFYING ALL AREAS WHERE CONSTRUCTION DISTURBANCE SHALL NOT BE PERMITTED INCLUDING, BUFFER AREAS, WETLANDS, SELECT TREES, AND ADJOINING PROPERTIES.
 - B. INSTALL TREE PROTECTION AND USE PERIMETER EROSION CONTROL PRINCIPLES. CONSTRUCT SEDIMENT CONTROL DAMS AND ASSOCIATED EROSION AND SEDIMENT CONTROL MEASURES AS NECESSARY TO DIVERT ANY SORT OF RUNOFF.
 - C. INSTALL A STABILIZED CONSTRUCTION ENTRANCE AS SHOWN ON PLANS OR AS DIRECTED BY OWNER'S REPRESENTATIVE.
 - D. ESTABLISH EROSION AND SEDIMENT CONTROL MEASURES PRIOR TO BEGINNING EARTHWORK ACTIVITIES.
 - E. CLEAR AND GRUB SITE.
 - F. REMOVE AND DISPOSE OF ALL REMOVED VEGETATION OFF-SITE.
 - G. STRIP AND STOCKPILE TOPSOIL FROM PROPOSED PAVEMENT, STRUCTURAL FILL AND CUT AREAS. REFER TO PLANS FOR DESIGNATION AREAS FOR STOCKPILING TOPSOIL.
 - H. ESTABLISH GRADE ELEVATIONS
 - I. ALL TEMPORARY EROSION AND SEDIMENT CONTROL MEASURES AS WELL AS STOCK PILES ARE TO BE MULCHED AND SEEDED FOR TEMPORARY VEGETATIVE COVER IMMEDIATELY FOLLOWING GRADING.
 - J. CONSTRUCT STORMWATER MANAGEMENT FEATURES.
 - K. CONSTRUCT UTILITIES AND INFRASTRUCTURE IMPROVEMENTS.
 - L. FINE GRADE AND SPREAD TOPSOIL, INSTALL LANDSCAPING, SITE AMENITIES, AND PERMANENT SEEDING.
 - M. REMOVE TEMPORARY EROSION AND SEDIMENT CONTROL FEATURES UPON ESTABLISHMENT OF PERMANENT GROUND COVER.
 - N. NOTIFY APPROPRIATE PERSONS OF COMPLETION OF FINAL SITE STABILIZATION.

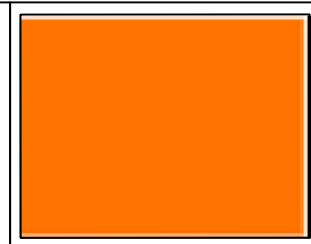


**DMSJ ENGINEERS &
ARCHITECTS**
DESIGN FIRM

DESIGNER: SPM	PROJECT: BELMONT FIRE DEPARTMENT	
DRAWN BY: SPM		
CHECKED BY: JAR		
SCALE: 1" = 100'	DRAWING TITLE: GENERAL NOTES	DRAWING NO. C-100
DATE: 2/22/2019		

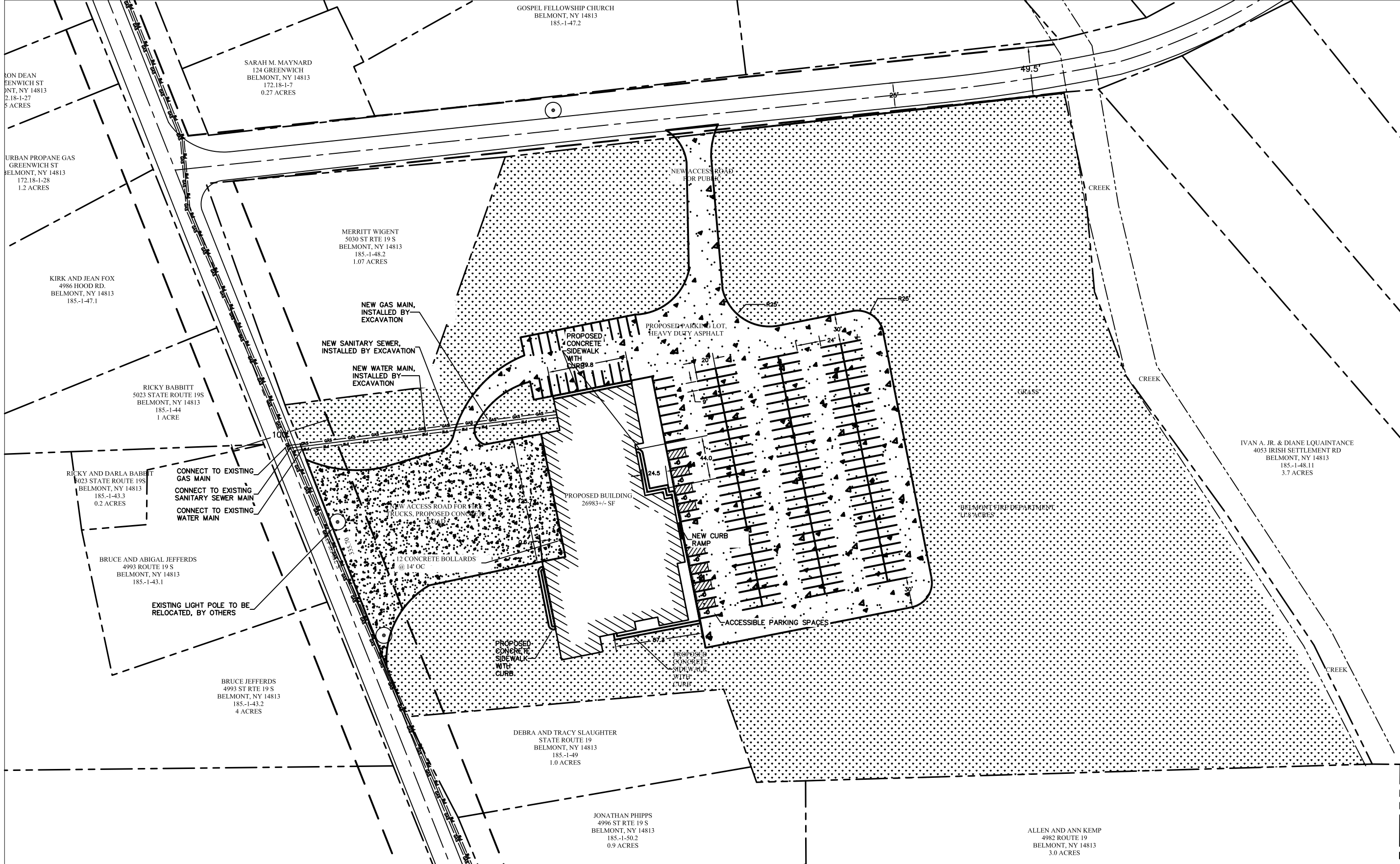


EXISTING	
PROPERTY LINES	---
CONTOURS	- - - -
SURVEYED LAND	=====
ROAD CENTER LINE	=====
ROAD BOUNDARIES	=====
GAS MAIN	--- GAS --- GAS --- GAS ---
WATER MAIN	--- W --- W --- W --- W ---
SANITARY SEWER MAIN	--- S --- S --- S --- S ---
DRAINAGE FLOW	====>
TREE BOUNDARIES	-----
CREEK	~~~~~
UTILITY POLE	⊙
ELEVATION	1390
PROPOSED	
PROPERTY LINES	---
CONTOURS	- - - -
SURVEYED LAND	=====
ROAD CENTER LINE	=====
ROAD BOUNDARIES	=====
GAS MAIN	--- GAS --- GAS --- GAS ---
WATER MAIN	--- W --- W --- W --- W ---
SANITARY SEWER MAIN	--- S --- S --- S --- S ---
DRAINAGE FLOW	====>
TREE BOUNDARIES	-----
CREEK	~~~~~
UTILITY POLE	⊙
ELEVATION	1390
FIRE HALL	■
BOLLARD	•
CONCRETE ROAD	=====
PARKING LOT	
SIDEWALK	=====
GRASS	

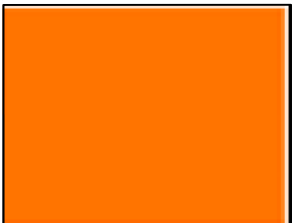


DMSJ ENGINEERS & ARCHITECTS
DESIGN FIRM

DESIGNER: SPM	PROJECT: BELMONT FIRE DEPARTMENT	
DRAWN BY: SPM		
CHECKED BY: JAR		
SCALE: 1" = 100'	DRAWING TITLE: EXISTING CONDITIONS	DRAWING NO. C101
DATE: 2/22/2019		



EXISTING	
PROPERTY LINES	---
CONTOURS	---
SURVEYED LAND	---
ROAD CENTER LINE	---
ROAD BOUNDARIES	---
GAS MAIN	---
WATER MAIN	---
SANITARY SEWER MAIN	---
SHRUBS	---
DRIVE	---
UTILITY POLE	---
ELEVATION	---
PROPOSED	
PROPERTY LINES	---
CONTOURS	---
SURVEYED LAND	---
ROAD CENTER LINE	---
ROAD BOUNDARIES	---
GAS MAIN	---
WATER MAIN	---
SANITARY SEWER MAIN	---
SHRUBS	---
DRIVE	---
UTILITY POLE	---
ELEVATION	---
FIRE HALL	---
CONCRETE ROAD	---
PARKING LOT	---
SIDEWALK	---
GRASS	---

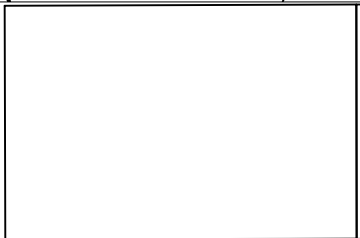
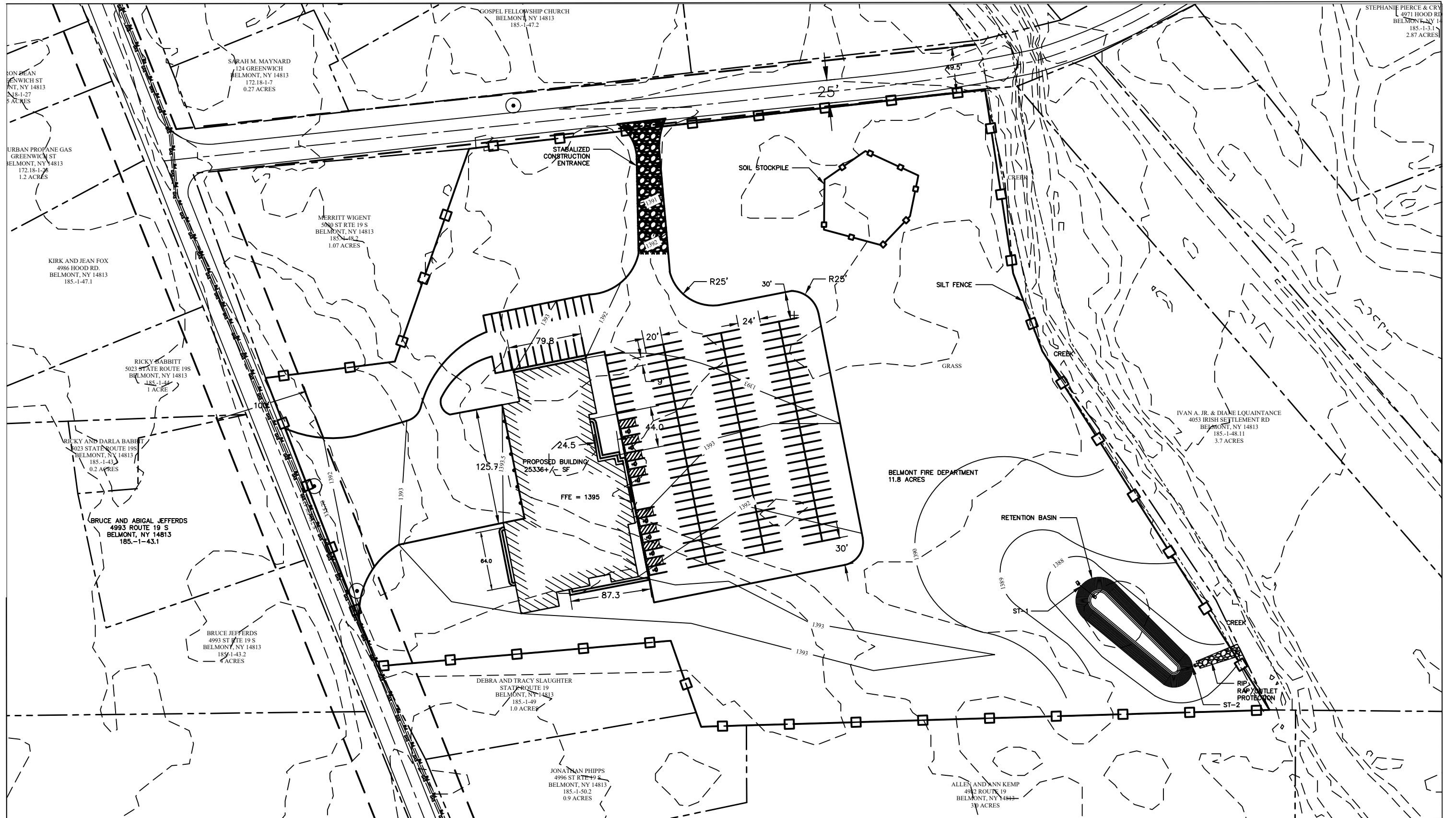


DMSJ ENGINEERS & ARCHITECTS
DESIGN FIRM

DESIGNER:
SPM
DRAWN BY:
SPM
CHECKED BY:
JAR
SCALE:
1" = 100'
DATE:
2/22/2019

PROJECT:
BELMONT FIRE DEPARTMENT

DRAWING TITLE:
SITE & UTILITIES
DRAWING NO.
C102

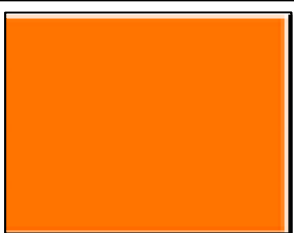
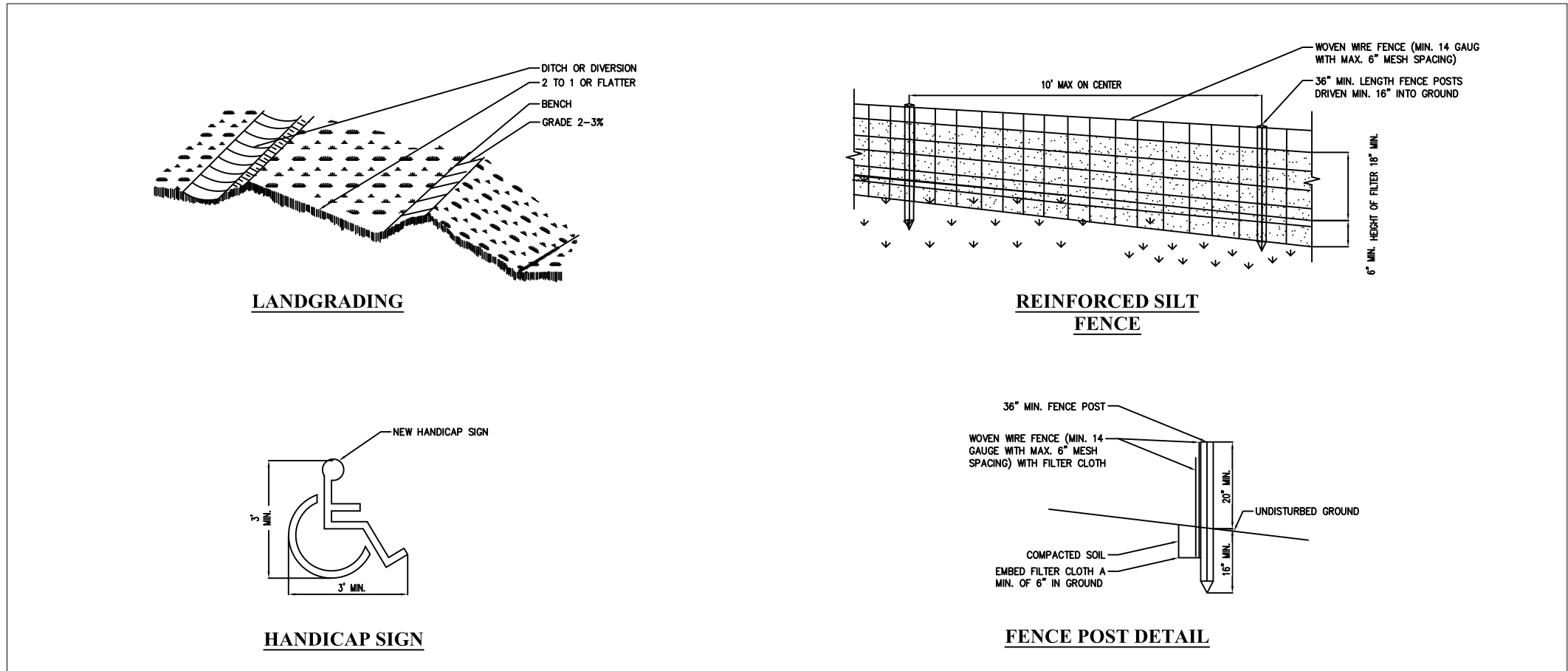
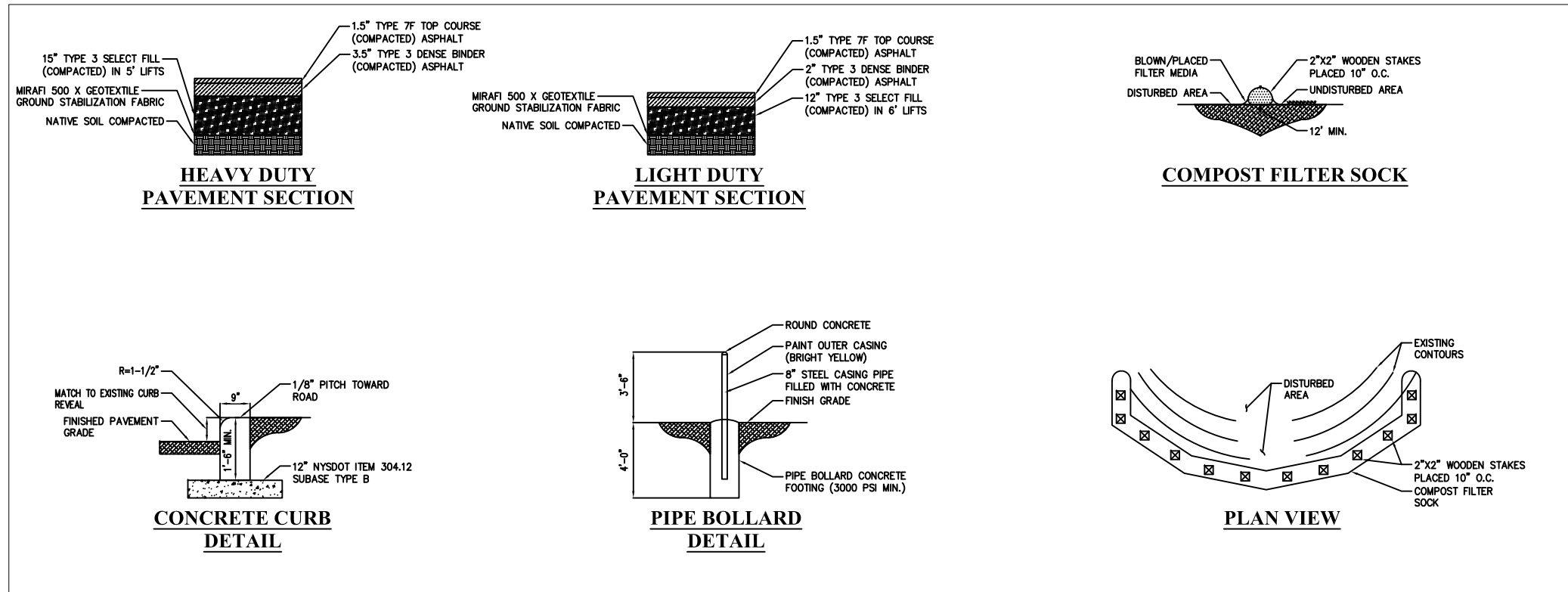


DMSJ ENGINEERS & ARCHITECTS
 DESIGN FIRM

DESIGNER:
SPM
 DRAWN BY:
SPM
 CHECKED BY:
JAR
 SCALE:
1" = 100'
 DATE:
2/22/2019

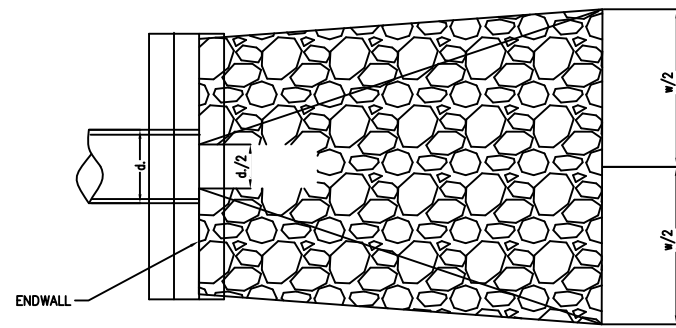
PROJECT:
BELMONT FIRE DEPARTMENT
 DRAWING TITLE:
GRADING AND EROSION CONTROL

DRAWING NO.
C103

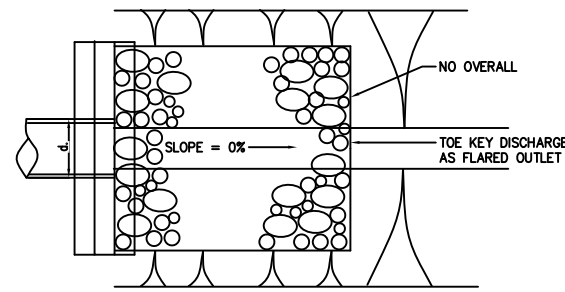


DMSJ ENGINEERS & ARCHITECTS
DESIGN FIRM

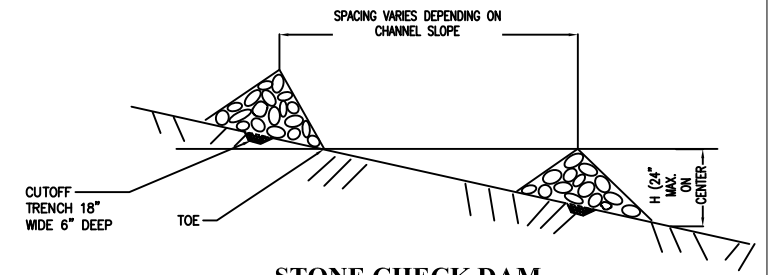
DESIGNER: SPM	PROJECT: BELMONT FIRE DEPARTMENT	
DRAWN BY: SPM		
CHECKED BY: JAR		
SCALE: 1" = 100'	DRAWING TITLE: DETAILS	DRAWING NO. C-104
DATE: 2/22/2019		



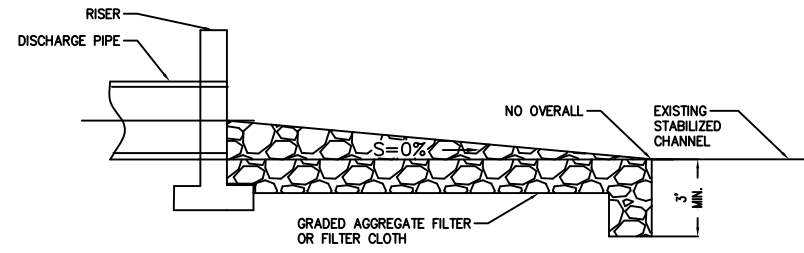
PLAN VIEW



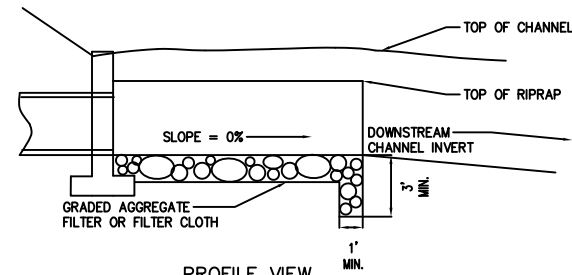
PLAN VIEW



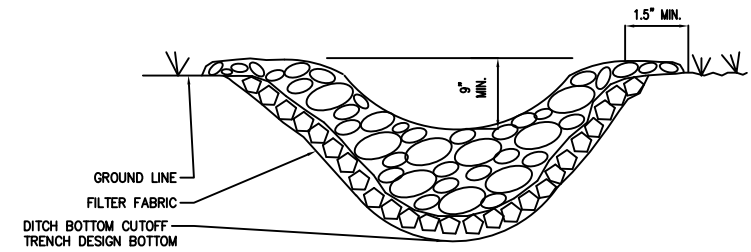
STONE CHECK DAM



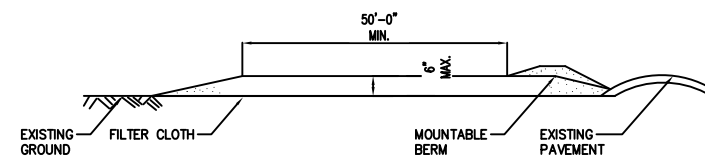
RIP RAP OUTLET PROTECTION 1



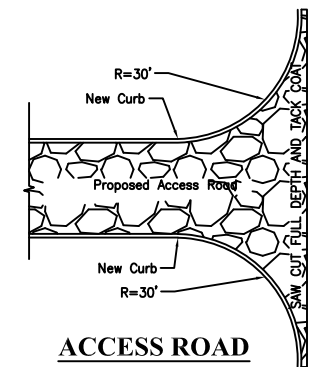
PROFILE VIEW RIP RAP OUTLET PROTECTION 2



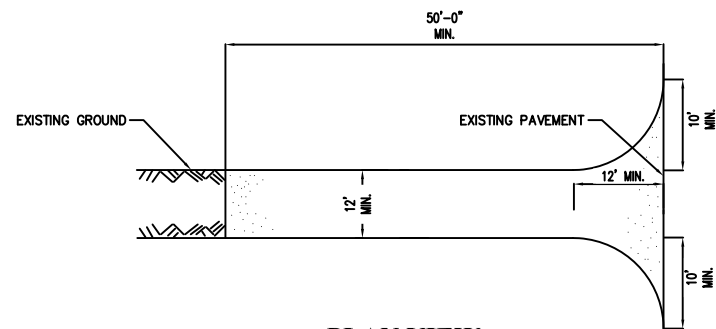
STONE CHECK DAM DETAIL



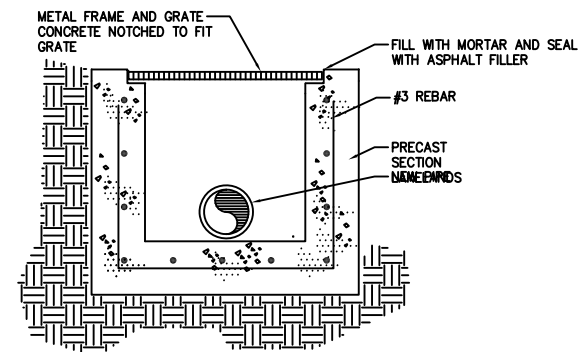
STABILIZED CONSTRUCTION ACCESS



ACCESS ROAD



PLAN VIEW



CATCH BASIN

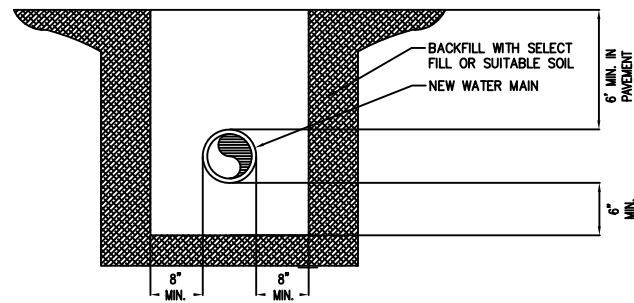


DMSJ ENGINEERS & ARCHITECTS
DESIGN FIRM

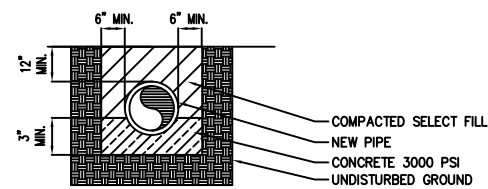
DESIGNER:
SPM
DRAWN BY:
SPM
CHECKED BY:
JAR
SCALE:
1" = 100'
DATE:
2/22/2019

PROJECT:
BELMONT FIRE DEPARTMENT

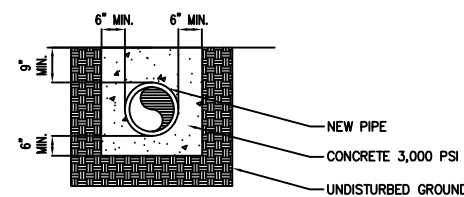
DRAWING TITLE:
DETAILS
DRAWING NO.:
C-105



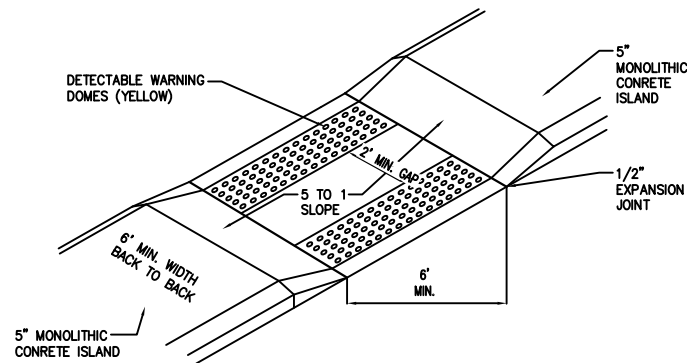
WATER MAIN TRENCH



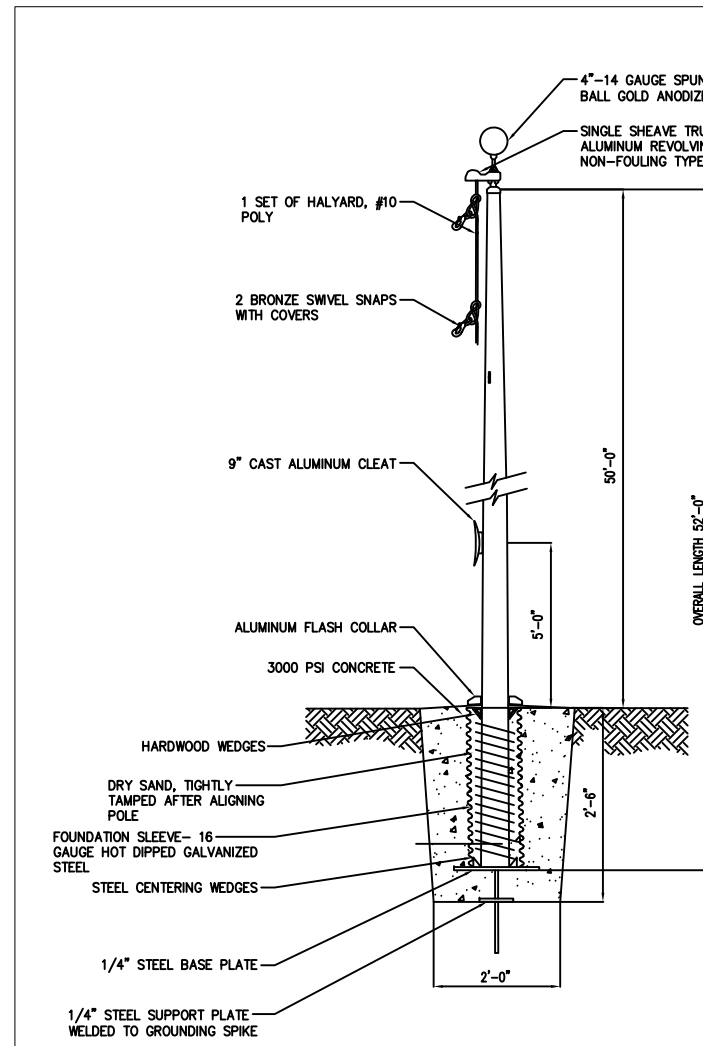
UTILITY BEDDING MATERIAL



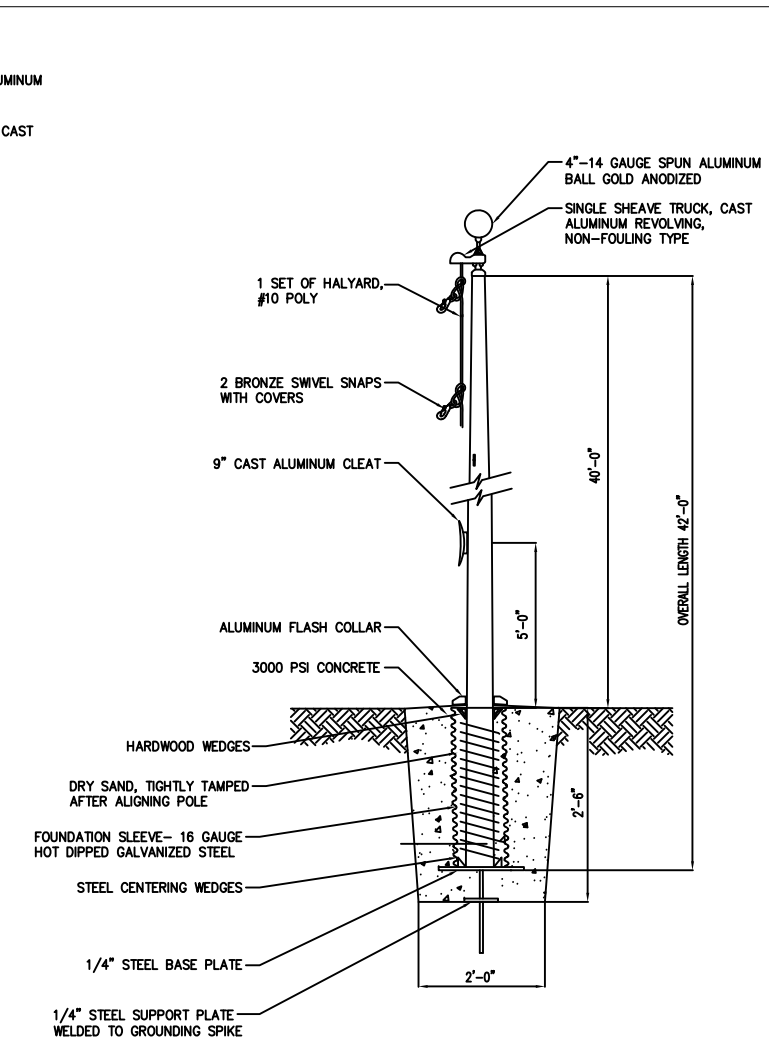
CONCRETE ENCASEMENT



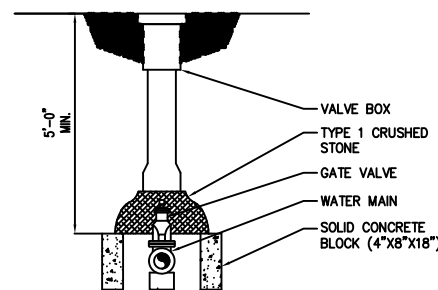
PARALLEL CURB RAMP



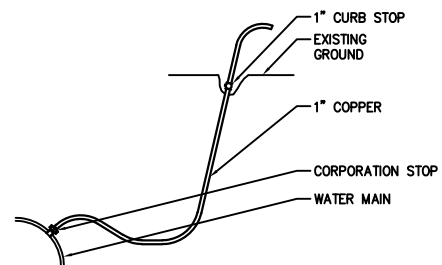
FLAG POLE TYPE 1



FLAG POLE TYPE 2



VALVE DETAIL



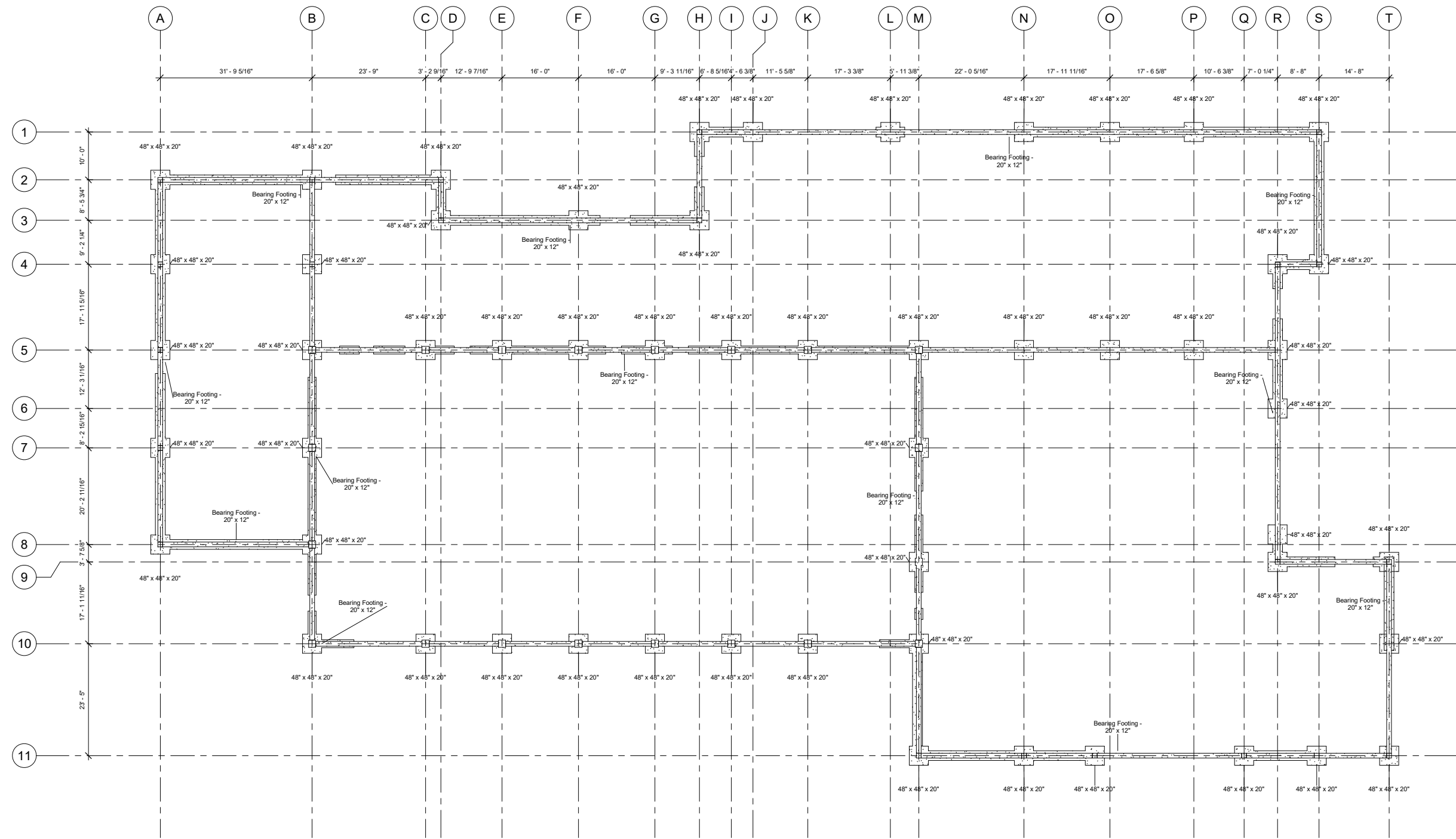
DISINFECTION BLOWOFF SAMPLING TAP



DMSJ ENGINEERS & ARCHITECTS
DESIGN FIRM

DESIGNER:
SPM
DRAWN BY:
SPM
CHECKED BY:
JAR
SCALE:
1" = 100'
DATE:
2/22/2019

PROJECT:
BELMONT FIRE DEPARTMENT
DRAWING TITLE:
DETAILS
DRAWING NO.
C-106

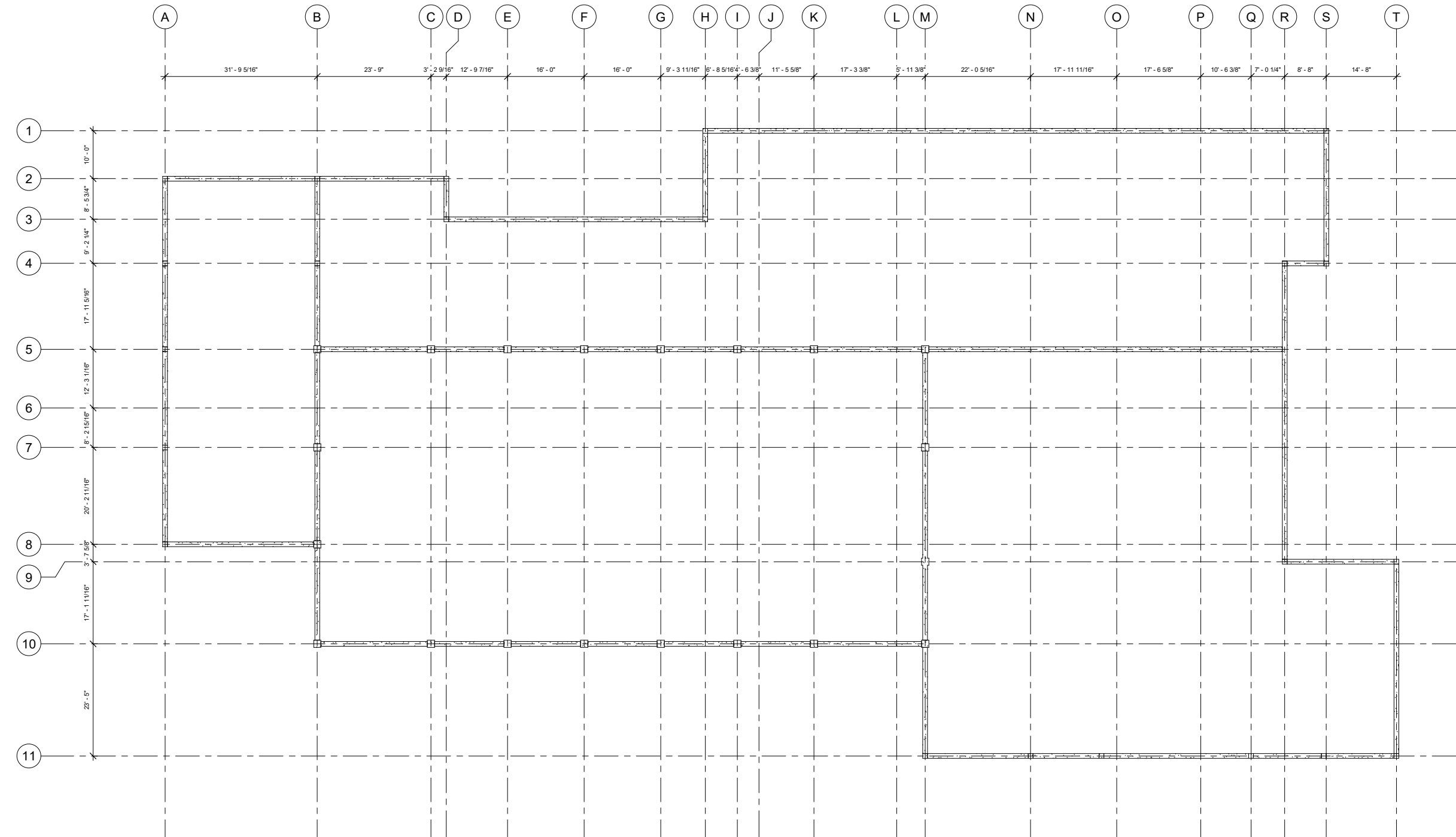


① Level 1 - Foundation Plan
1" = 10'-0"




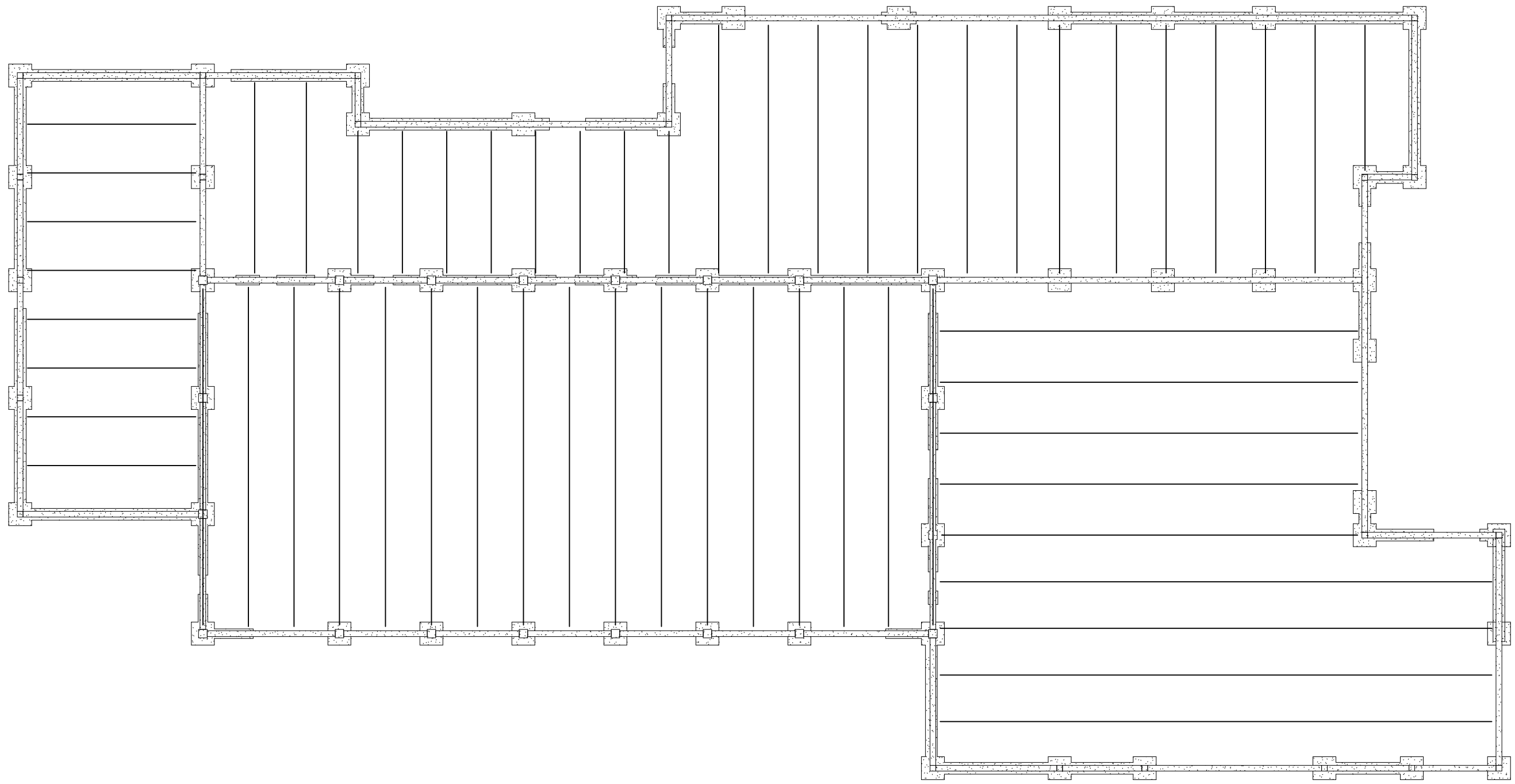
**DMSJ ENGINEERS &
ARCHITECTS**
DESIGN FIRM

DESIGNER: DRC	PROJECT NAME: Belmont Fire Hall	DRAWING NO.:
DRAWN BY: DRC	DRAWING TITLE: Foundation	S100
CHECKED BY: SPM	DATE: 4/21/2019 21:50:22	
SCALE: 1" = 10'-0"		




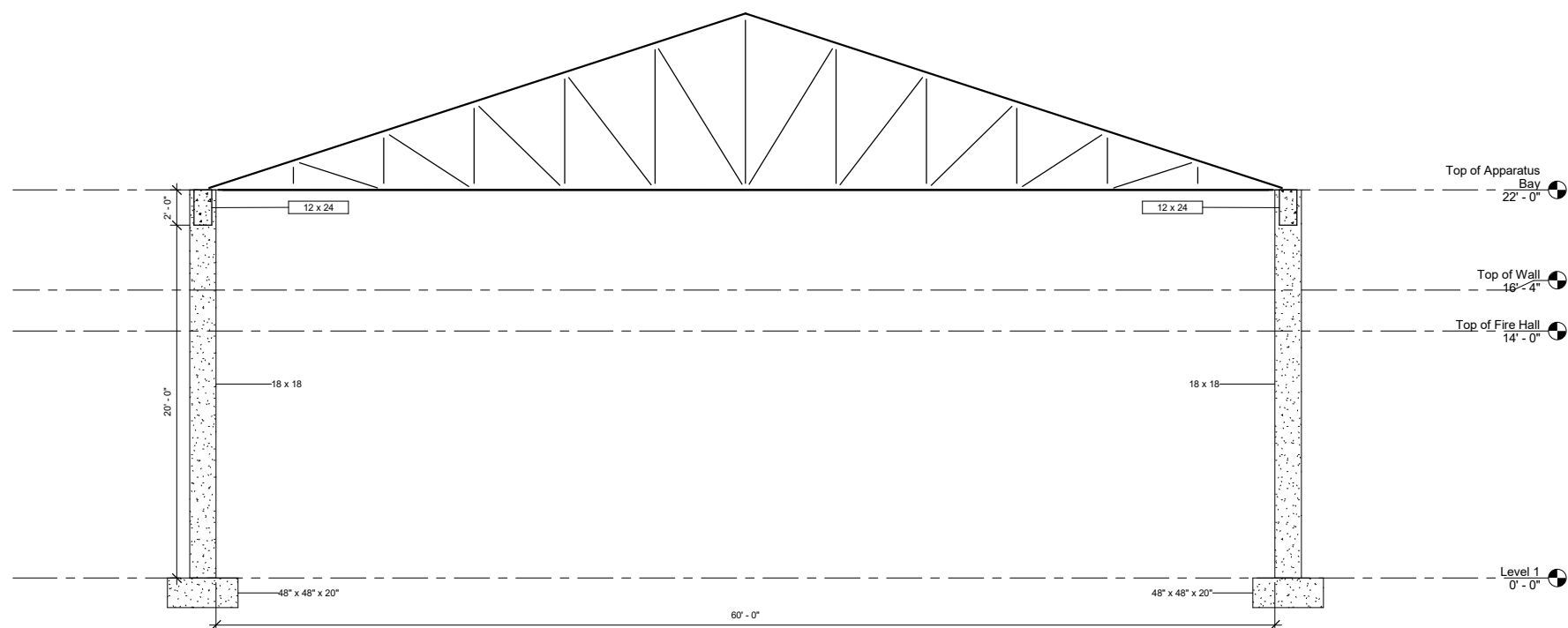
① Level 1 - Framing Plan
1" = 10'-0"

	DESIGNER: DRC		PROJECT NAME:
	DRAWN BY: DRC		Belmont Fire Hall
	CHECKED BY: SPM		DRAWING TITLE:
	SCALE: 1" = 10'-0"		Framing Plan
	DATE: 4/21/2019 21:56:54		DRAWING NO.:
			S101

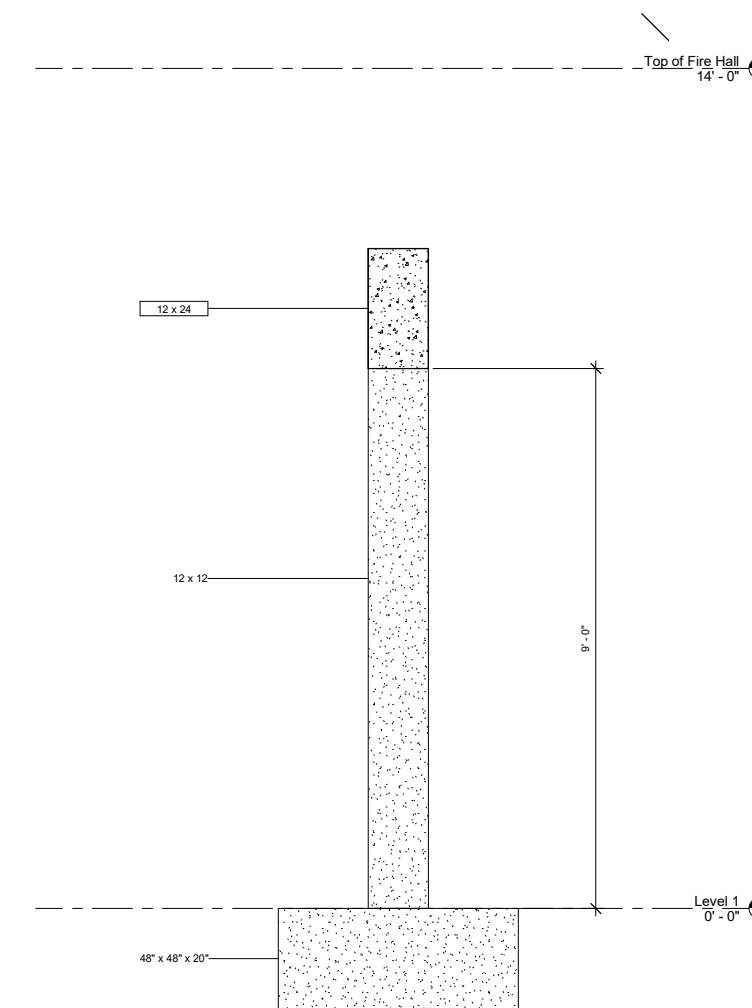


① Level 1 - Truss Plan
1/8" = 1'-0"

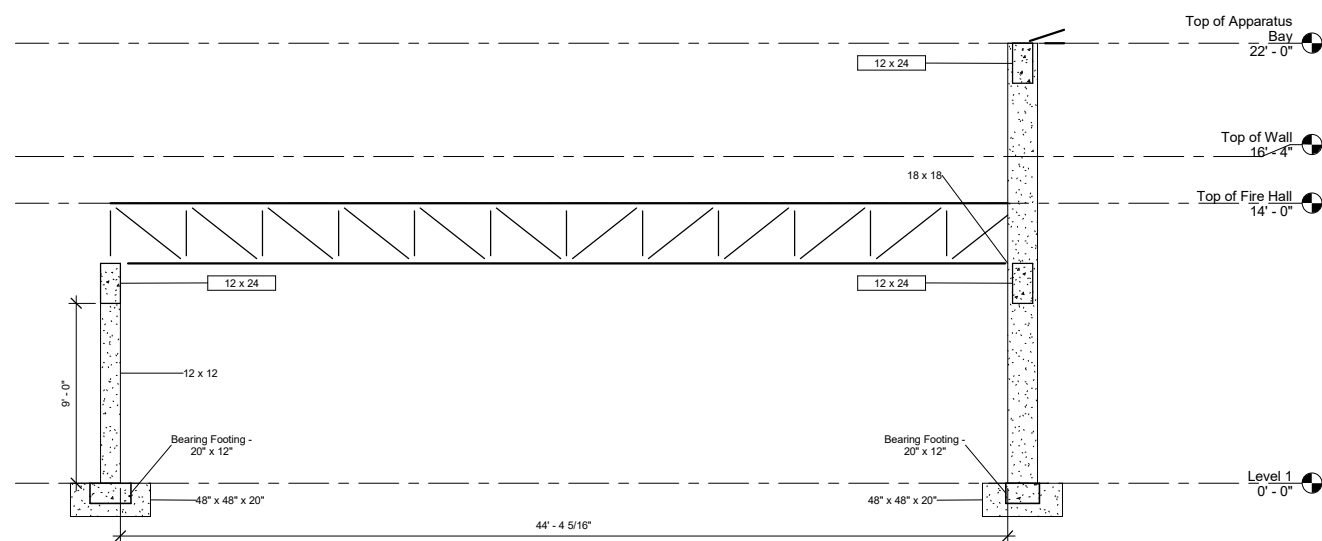
	DESIGNER: DRC		PROJECT NAME:
	DRAWN BY: DRC		Belmont Fire Hall
	CHECKED BY: SPM		DRAWING TITLE:
	SCALE: 1/8" = 1'-0"		Truss Plan
	DATE: 4/21/2019 21:50:27		DRAWING NO.:
			S102




② Apparatus Bay Framing
1/4" = 1'-0"



① Column
3/4" = 1'-0"



③ Flat Truss
1/4" = 1'-0"

	DMSJ ENGINEERS & ARCHITECTS DESIGN FIRM		DESIGNER: DRC	PROJECT NAME:
			DRAWN BY: DRC	Belmont Fire Hall
			CHECKED BY: SPM	
			SCALE: As Indicated	DRAWING TITLE:
			DATE: 4/21/2019 21:50:37	Details

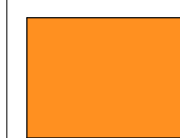
Structural Column Schedule					
Type	Length	Column Location Mark	Base Level	Top Level	Comments
12 x 12	11' - 0"	A-2	Level 1	Top of Fire Hall	
12 x 12	11' - 0"	A-4	Level 1	Top of Fire Hall	
12 x 12	11' - 0"	A-5	Level 1	Top of Fire Hall	
12 x 12	11' - 0"	A-7	Level 1	Top of Fire Hall	
12 x 12	11' - 0"	A-8	Level 1	Top of Fire Hall	
12 x 12	11' - 0"	B-2	Level 1	Top of Fire Hall	
12 x 12	11' - 0"	B-4	Level 1	Top of Fire Hall	
18 x 18	22' - 0"	B-5	Level 1	Top of Apparatus Bay	
18 x 18	22' - 0"	B-7	Level 1	Top of Apparatus Bay	
18 x 18	22' - 0"	B-8	Level 1	Top of Apparatus Bay	
18 x 18	22' - 0"	B-10	Level 1	Top of Apparatus Bay	
18 x 18	22' - 0"	C-5	Level 1	Top of Apparatus Bay	
18 x 18	22' - 0"	C-10	Level 1	Top of Apparatus Bay	
12 x 12	11' - 0"	D-2	Level 1	Top of Fire Hall	
12 x 12	11' - 0"	D-3	Level 1	Top of Fire Hall	
18 x 18	22' - 0"	E-5	Level 1	Top of Apparatus Bay	
18 x 18	22' - 0"	E-10	Level 1	Top of Apparatus Bay	
12 x 12	11' - 0"	F-3	Level 1	Top of Fire Hall	
18 x 18	22' - 0"	F-5	Level 1	Top of Apparatus Bay	
18 x 18	22' - 0"	F-10	Level 1	Top of Apparatus Bay	
18 x 18	22' - 0"	G-5	Level 1	Top of Apparatus Bay	
18 x 18	22' - 0"	G-10	Level 1	Top of Apparatus Bay	
12 x 12	11' - 0"	H-1	Level 1	Top of Fire Hall	
12 x 12	11' - 0"	H-3	Level 1	Top of Fire Hall	
18 x 18	22' - 0"	I-5	Level 1	Top of Apparatus Bay	
18 x 18	22' - 0"	I-10	Level 1	Top of Apparatus Bay	

Structural Column Schedule					
Type	Length	Column Location Mark	Base Level	Top Level	Comments
12 x 12	11' - 0"	J-1	Level 1	Top of Fire Hall	
18 x 18	22' - 0"	K-5	Level 1	Top of Apparatus Bay	
18 x 18	22' - 0"	K-10	Level 1	Top of Apparatus Bay	
12 x 12	11' - 0"	L-1	Level 1	Top of Fire Hall	
18 x 18	22' - 0"	M-5	Level 1	Top of Apparatus Bay	
18 x 18	22' - 0"	M-7	Level 1	Top of Apparatus Bay	
18 x 18	22' - 0"	M-9	Level 1	Top of Apparatus Bay	
18 x 18	22' - 0"	M-10	Level 1	Top of Apparatus Bay	
12 x 12	11' - 0"	M-11	Level 1	Top of Fire Hall	
12 x 12	11' - 0"	N-1	Level 1	Top of Fire Hall	
12 x 12	11' - 0"	N-5	Level 1	Top of Fire Hall	
12 x 12	11' - 0"	N-11	Level 1	Top of Fire Hall	
12 x 12	11' - 0"	O(3' - 2")-11	Level 1	Top of Fire Hall	
12 x 12	11' - 0"	O-1	Level 1	Top of Fire Hall	
12 x 12	11' - 0"	O-5	Level 1	Top of Fire Hall	
12 x 12	11' - 0"	P-1	Level 1	Top of Fire Hall	
12 x 12	11' - 0"	P-5	Level 1	Top of Fire Hall	
12 x 12	11' - 0"	Q-11	Level 1	Top of Fire Hall	
12 x 12	11' - 0"	R-4	Level 1	Top of Fire Hall	
12 x 12	11' - 0"	R-5	Level 1	Top of Fire Hall	
12 x 12	11' - 0"	R-6	Level 1	Top of Fire Hall	
12 x 12	11' - 0"	R-8(2' - 1 9/16")	Level 1	Top of Fire Hall	
12 x 12	11' - 0"	R-9	Level 1	Top of Fire Hall	
12 x 12	11' - 0"	S-1	Level 1	Top of Fire Hall	
12 x 12	11' - 0"	S-4	Level 1	Top of Fire Hall	
12 x 12	11' - 0"	S-11	Level 1	Top of Fire Hall	
12 x 12	11' - 0"	T-9	Level 1	Top of Fire Hall	
12 x 12	11' - 0"	T-10	Level 1	Top of Fire Hall	
12 x 12	11' - 0"	T-11	Level 1	Top of Fire Hall	

Structural Framing Schedule					
Type	Description	Structural Material	Length	Level	Comments
12 x 24	Concrete Rectangular Beam	Concrete, Cast-in-Place gray	126' - 11 3/4"		
12 x 24	Concrete Rectangular Beam	Concrete, Cast-in-Place gray	61' - 6"		
12 x 24	Concrete Rectangular Beam	Concrete, Cast-in-Place gray	126' - 11 3/4"		
12 x 24	Concrete Rectangular Beam	Concrete, Cast-in-Place gray	61' - 6"		
12 x 24	Concrete Rectangular Beam	Concrete, Cast-in-Place gray	31' - 9 5/16"		
12 x 24	Concrete Rectangular Beam	Concrete, Cast-in-Place gray	76' - 4"		
12 x 24	Concrete Rectangular Beam	Concrete, Cast-in-Place gray	58' - 8 7/8"		
12 x 24	Concrete Rectangular Beam	Concrete, Cast-in-Place gray	23' - 5"		
12 x 24	Concrete Rectangular Beam	Concrete, Cast-in-Place gray	98' - 5 1/4"		
12 x 24	Concrete Rectangular Beam	Concrete, Cast-in-Place gray	40' - 6 11/16"		
12 x 24	Concrete Rectangular Beam	Concrete, Cast-in-Place gray	23' - 4"		
12 x 24	Concrete Rectangular Beam	Concrete, Cast-in-Place gray	62' - 3 5/8"		
12 x 24	Concrete Rectangular Beam	Concrete, Cast-in-Place gray	75' - 1 1/4"		
12 x 24	Concrete Rectangular Beam	Concrete, Cast-in-Place gray	129' - 8 5/16"		
12 x 24	Concrete Rectangular Beam	Concrete, Cast-in-Place gray	35' - 7 5/16"		
12 x 24	Concrete Rectangular Beam	Concrete, Cast-in-Place gray	8' - 5 3/4"		
12 x 24	Concrete Rectangular Beam	Concrete, Cast-in-Place gray	54' - 1 1/8"		
12 x 24	Concrete Rectangular Beam	Concrete, Cast-in-Place gray	18' - 5 3/4"		
12 x 24	Concrete Rectangular Beam	Concrete, Cast-in-Place gray	8' - 8"		
12 x 24	Concrete Rectangular Beam	Concrete, Cast-in-Place gray	27' - 8"		
12 x 24	Concrete Rectangular Beam	Concrete, Cast-in-Place gray	40' - 8 11/16"		
12 x 24	Concrete Rectangular Beam	Concrete, Cast-in-Place gray	61' - 6"		
12 x 24	Concrete Rectangular Beam	Concrete, Cast-in-Place gray	126' - 11 3/4"		

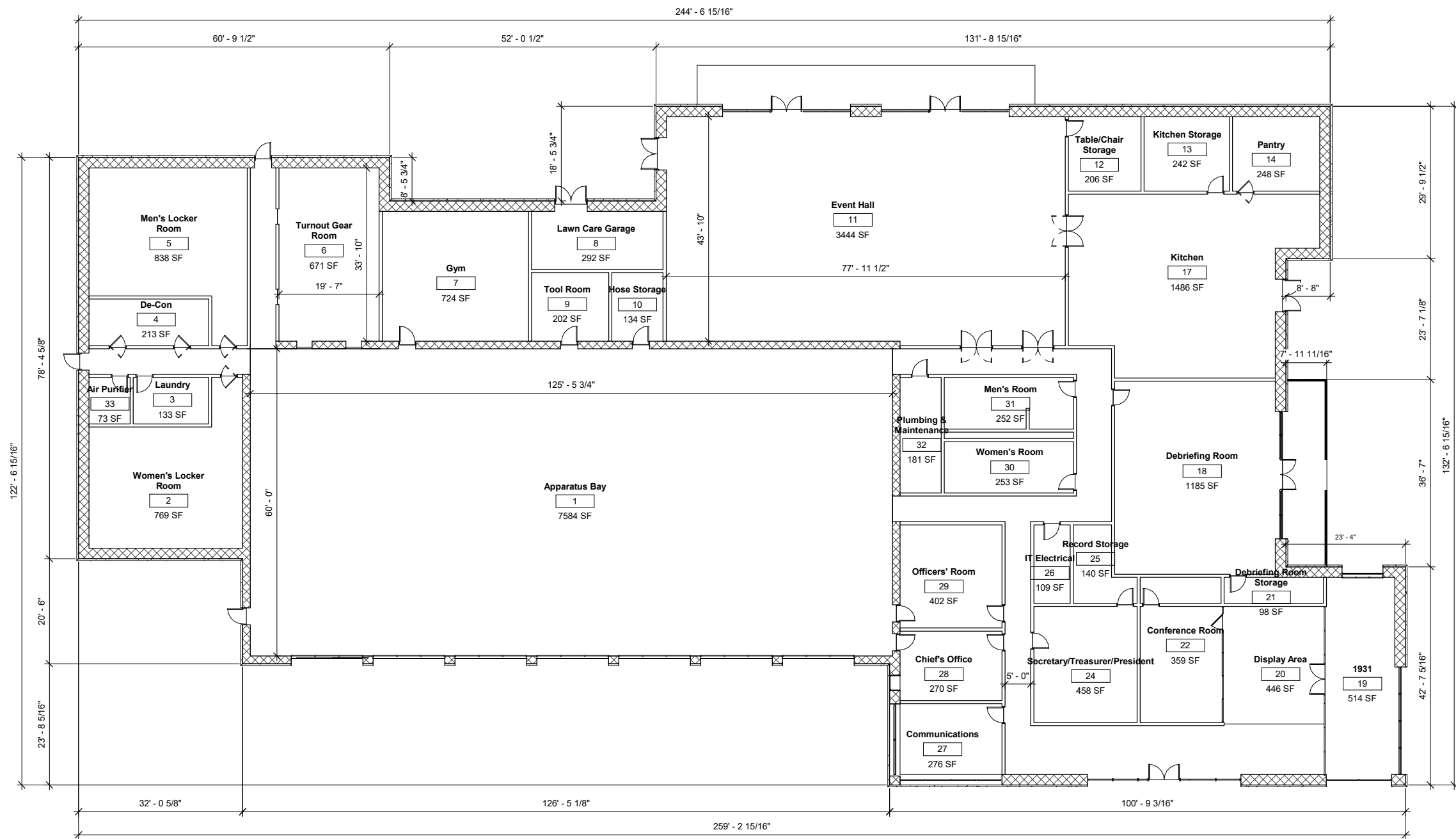
Grand total: 23

Structural Foundation Schedule								
Count	Type	Length	Width	Foundation Thickness	Area	Volume	Description	Comments
55	48" x 48" x 20"	4' - 0"	4' - 0"	1' - 8"	16 SF	26.67 CF	Isolated	
25	Bearing Footing - 20" x 12"		1' - 8"	1' - 0"			Wall	



DMSJ ENGINEERS & ARCHITECTS
DESIGN FIRM

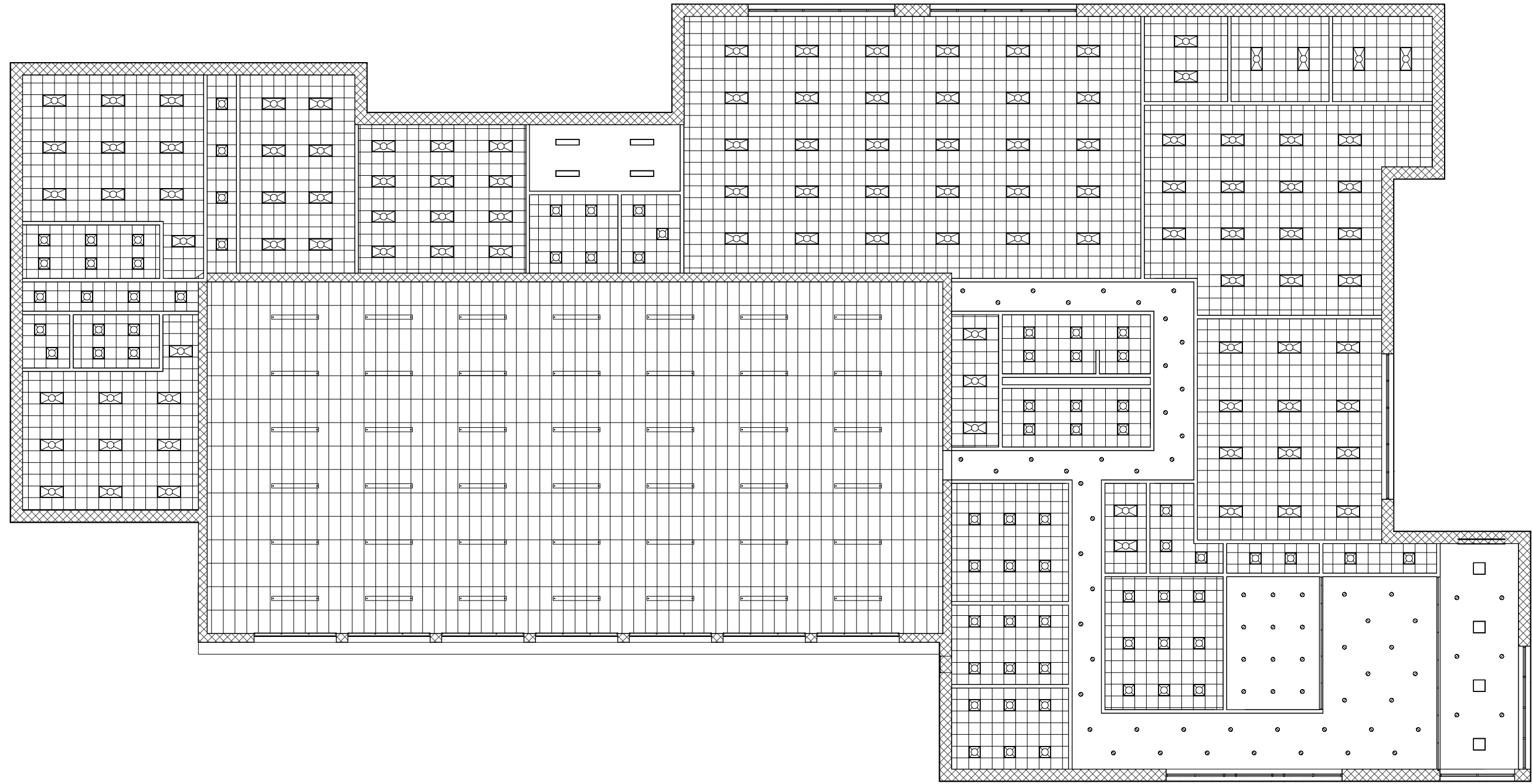
DESIGNER: DRC	PROJECT NAME: Belmont Fire Hall	DRAWING NO.:
DRAWN BY: DRC		
CHECKED BY: SPM	DRAWING TITLE: Schedules	
SCALE:		DRAWING NO.:
DATE: 4/21/2019 21:50:47		S104




① Level 1 - Dimensions
1" = 10'-0"

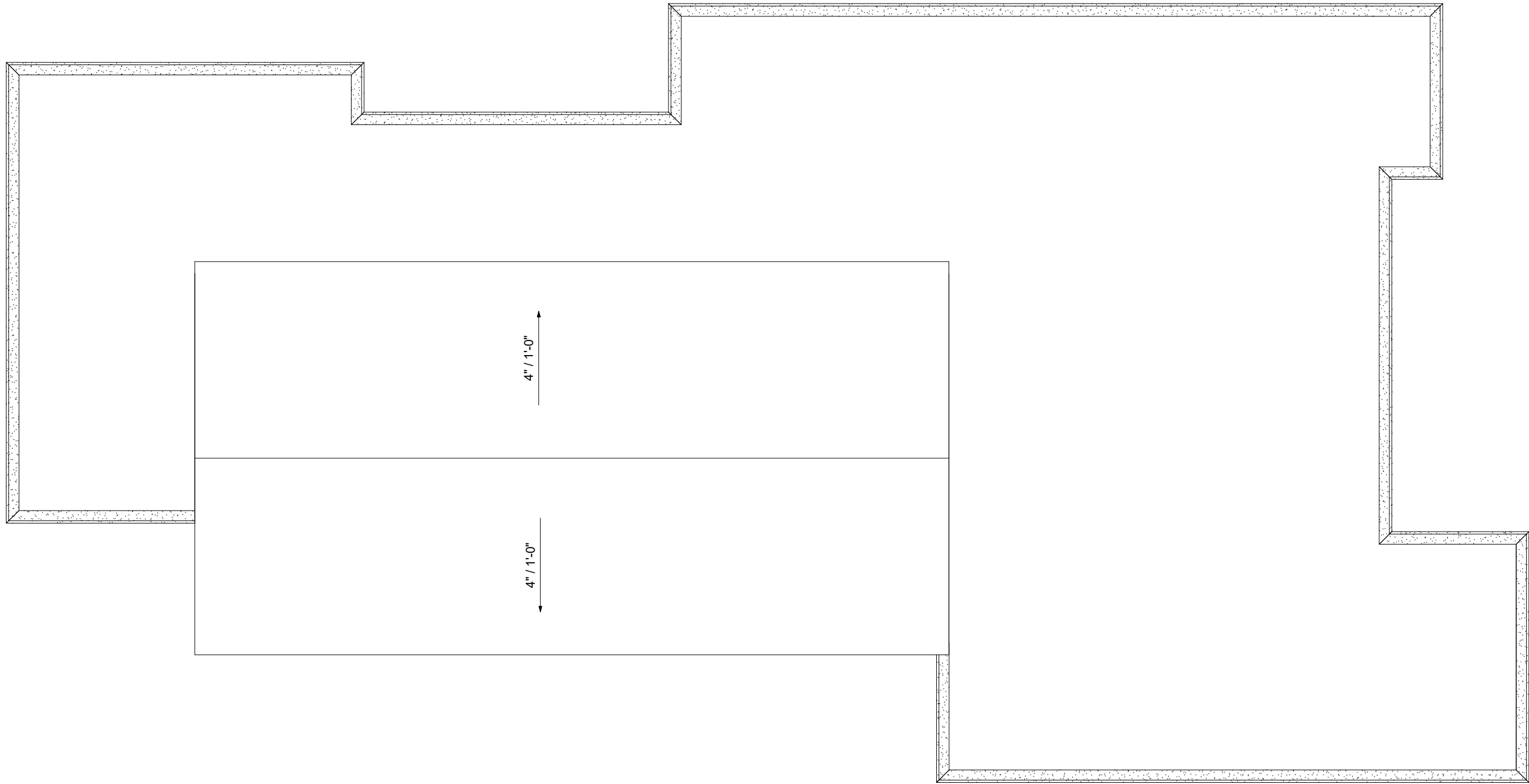


DESIGNER: DRC	PROJECT NAME: Belmont Fire Hall	DRAWING NO.:
DRAWN BY: DRC		
CHECKED BY: SPM		
SCALE: 1" = 10'-0"	DRAWING TITLE: Floor Plan	
DATE: 4/21/2019 21:49:50		A100



① Level 1
 1/8" = 1'-0"

 DMSJ ENGINEERS & ARCHITECTS DESIGN FIRM	DESIGNER: DRC		PROJECT NAME:
	DRAWN BY: DRC		Belmont Fire Hall
	CHECKED BY: SPM		DRAWING TITLE:
	SCALE: 1/8" = 1'-0"		Ceiling Plan
	DATE: 4/21/2019 21:49:52		DRAWING NO.:
			A101

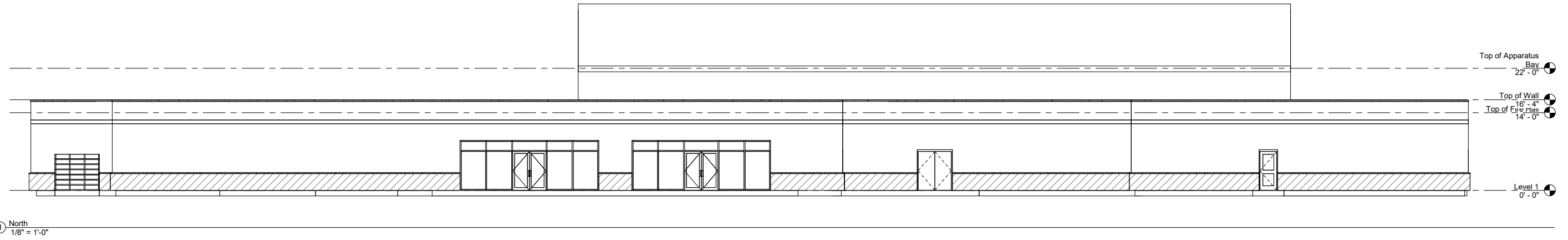


① Roof Plan
1/8" = 1'-0"

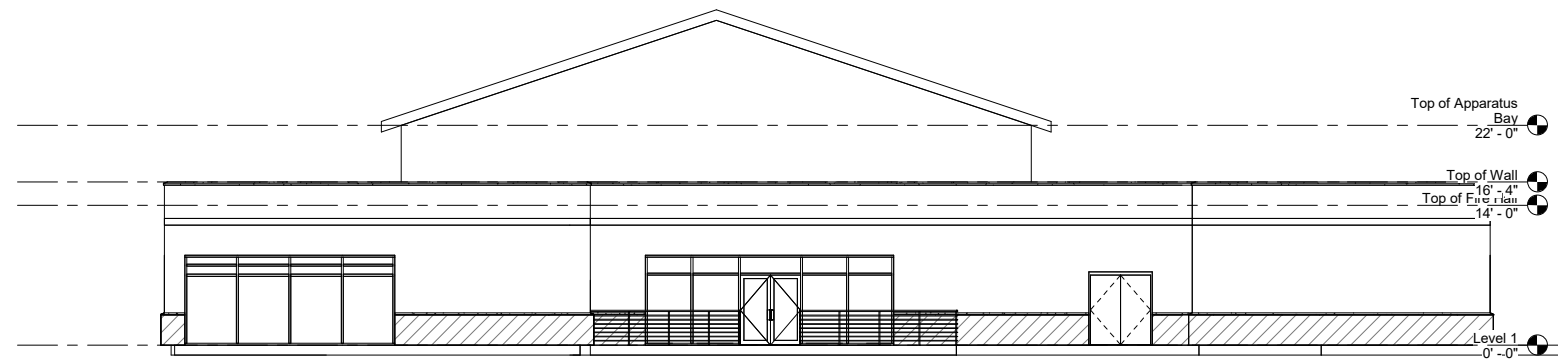


**DMSJ ENGINEERS &
ARCHITECTS**
DESIGN FIRM


DESIGNER: DRC	PROJECT NAME: Belmont Fire Hall	
DRAWN BY: DRC		
CHECKED BY: SPM		
SCALE: 1/8" = 1'-0"	DRAWING TITLE: Roof Plan	DRAWING NO.: A102
DATE: 4/21/2019 21:49:55		

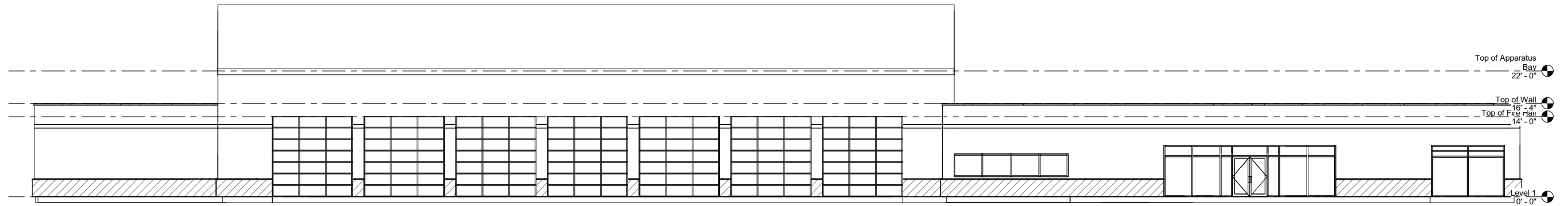


① North
1/8" = 1'-0"

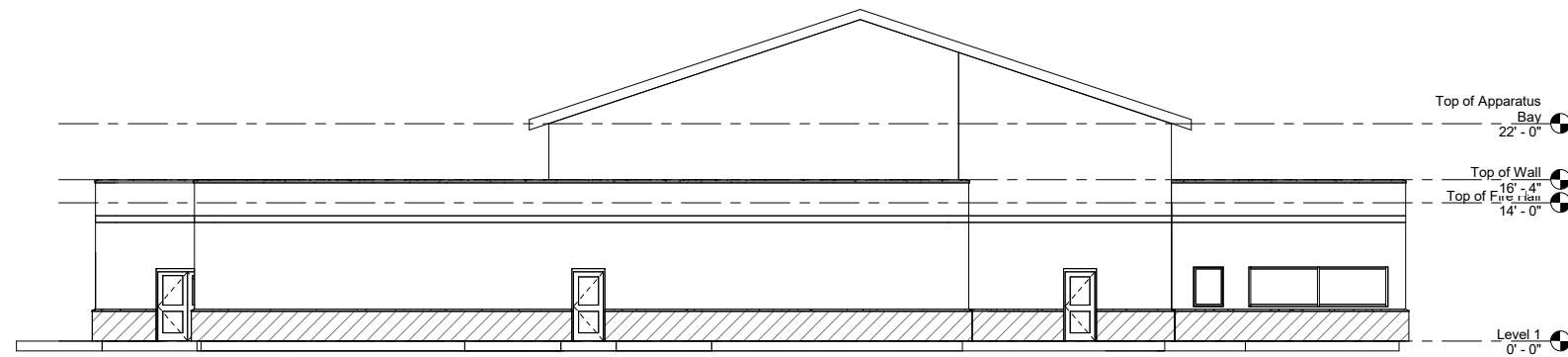


② East
1/8" = 1'-0"

 DMSJ ENGINEERS & ARCHITECTS DESIGN FIRM	DESIGNER: Designer	PROJECT NAME: Belmont Fire Hall
	DRAWN BY: DRC	
	CHECKED BY: SPM	
	SCALE: 1/8" = 1'-0"	DRAWING TITLE: North & East Elevations
DATE: 4/21/2019 21:49:58	DRAWING NO.: A201	



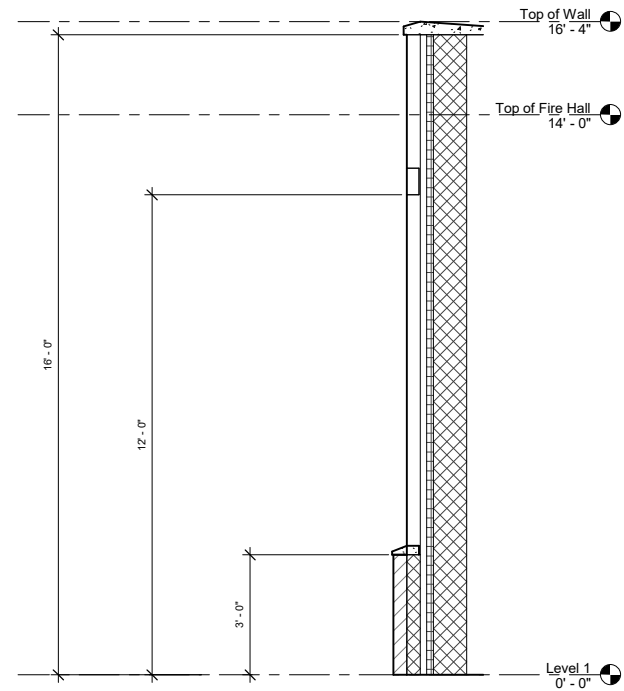
① South
1/8" = 1'-0"



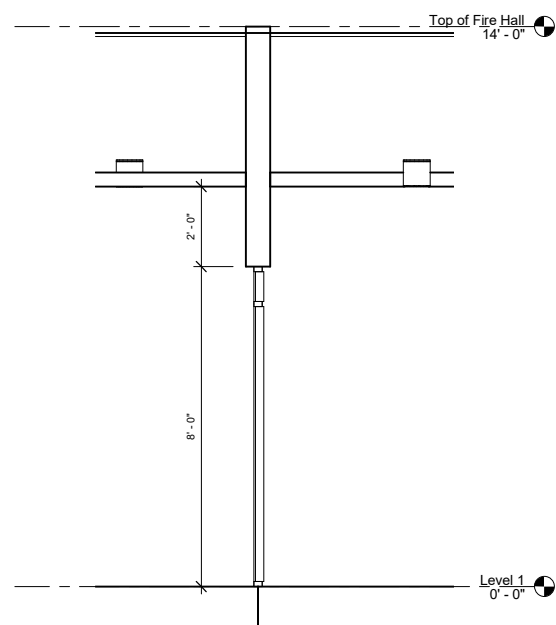
② West
1/8" = 1'-0"

DMSJ ENGINEERS & ARCHITECTS
DESIGN FIRM

DESIGNER: DRC	PROJECT NAME: Belmont Fire Hall	DRAWING NO.:
DRAWN BY: DRC		
CHECKED BY: SPM	DRAWING TITLE: South & West Elevations	DRAWING NO.:
SCALE: 1/8" = 1'-0"		A202
DATE: 4/21/2019 21:50:01		

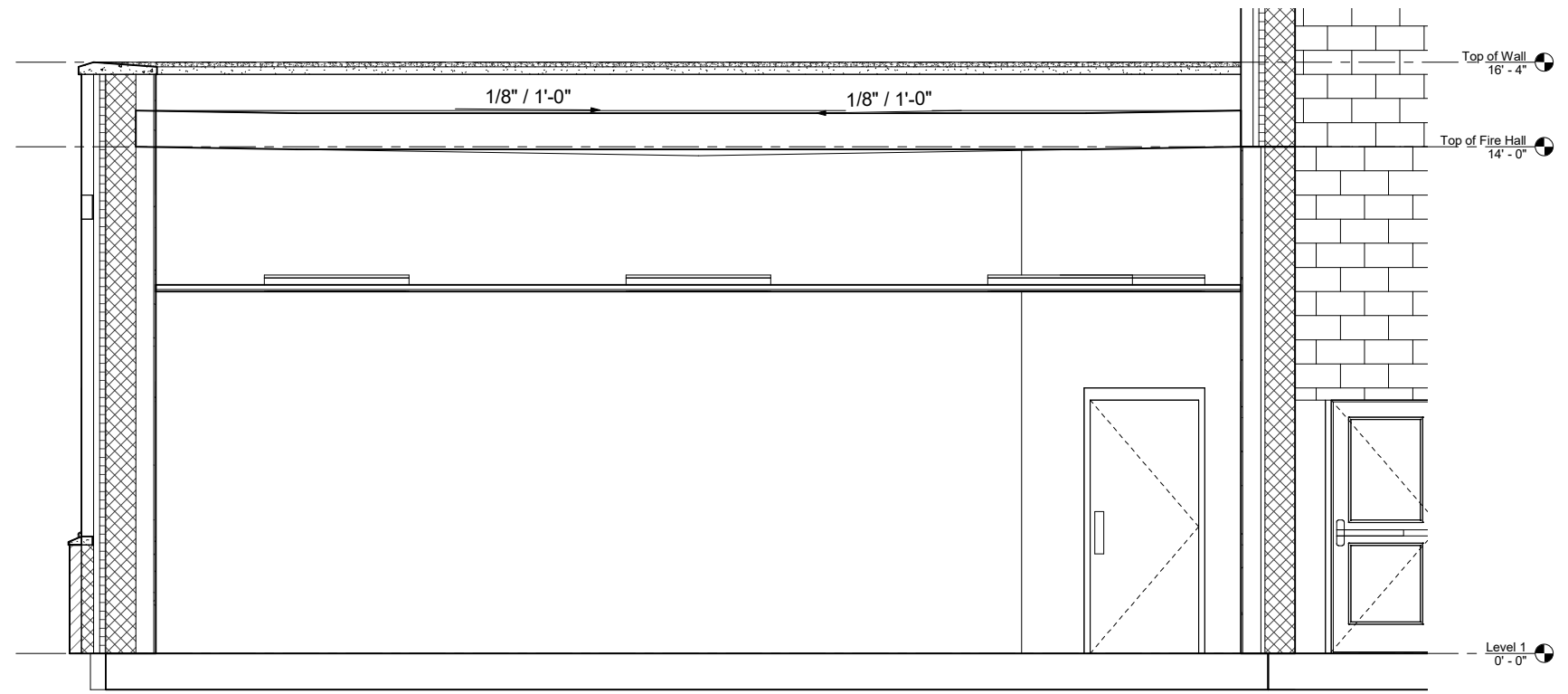


① Exterior Wall
1/2" = 1'-0"



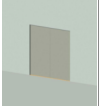


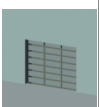
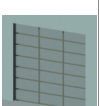
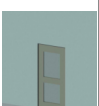
② Interior Curtain Wall
1/2" = 1'-0"

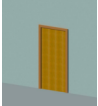
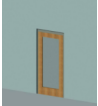

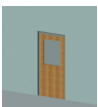
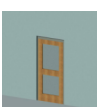
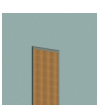
③ Flat Roof
1/2" = 1'-0"




**DMSJ ENGINEERS &
ARCHITECTS**
DESIGN FIRM

DESIGNER: DRC	PROJECT NAME: Belmont Fire Hall	DRAWING NO.:
DRAWN BY: DRC		
CHECKED BY: SPM	DRAWING TITLE: Details	A301
SCALE: 1/2" = 1'-0"		
DATE: 4/21/2019 21:50:03		

Door Schedule						
Model	Height	Width	Count	Cost	Image	Comments
Double Exterior	7' - 0"	6' - 0"	2			
Double Exterior - two lite	7' - 0"	6' - 0"	1			
Double Passage - Glass Curtain Wall	7' - 0"	6' - 0"	5			
Double Passage DBL acting	7' - 0"	6' - 0"	3			
Garage Bay Door 8' x 6'6"	6' - 6"	8' - 0"	1			
Garage Bay Door 14' x 14'	14' - 0"	14' - 0"	7			
Single Exterior - two lite	7' - 0"	3' - 0"	3			

Door Schedule						
Model	Height	Width	Count	Cost	Image	Comments
Single Passage	7' - 0"	3' - 0"	13			
Single Passage - full lite	7' - 0"	3' - 0"	1			
Single Passage - Glass Curtain Wall	7' - 0"	3' - 0"	1			
Single Passage - one lite	7' - 0"	3' - 0"	6			
Single Passage - two lite	7' - 0"	3' - 0"	1			
Single Passage DBL acting	7' - 0"	3' - 0"	5			

Grand total: 49

Window Schedule							
Model	Height	Width	Sill Height	Count	Cost	Image	Comments
Fixed Aluminum	4' - 0"	3' - 0"	3' - 6"	1			

Grand total: 1



**DMSJ ENGINEERS &
ARCHITECTS**
DESIGN FIRM

DESIGNER: DRC	PROJECT NAME: Belmont Fire Hall
DRAWN BY: DRC	
CHECKED BY: SPM	
SCALE:	DRAWING TITLE: Door & Window Schedule
DATE: 4/21/2019 21:50:06	DRAWING NO.: A302